

Come one! Come all! To the 12th Annual

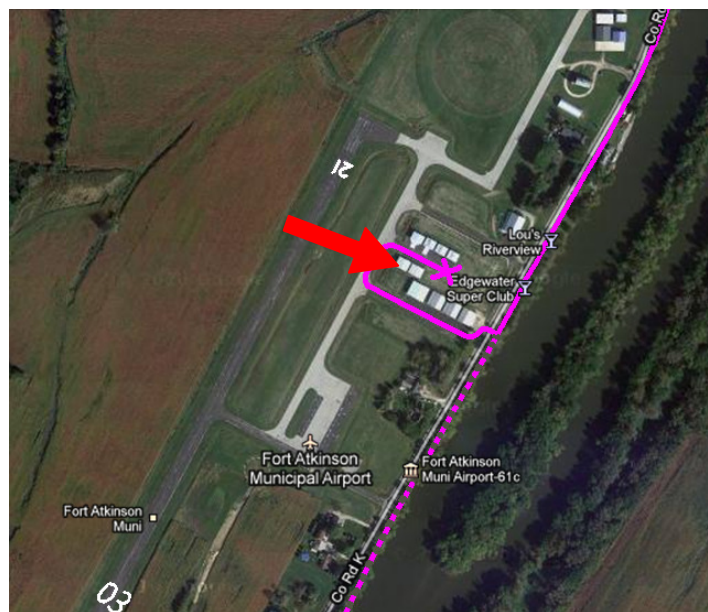
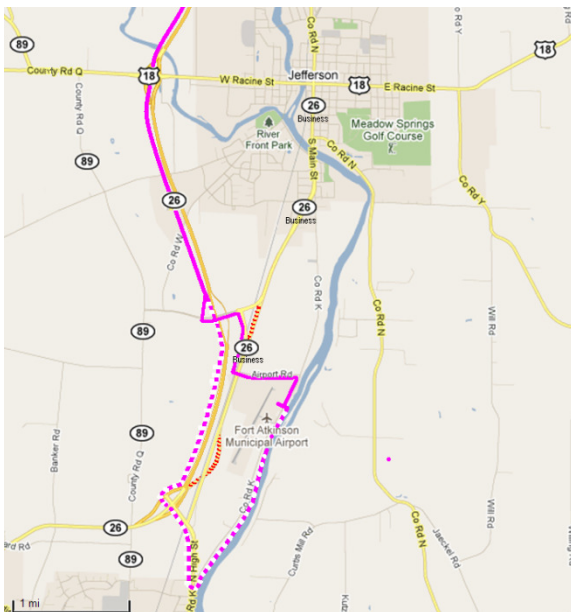
“First Fly-in”

**Fort Atkinson Airport, Saturday, January 7th, 2012
(rain, snow or shine)**

The fly-in starts about the time the first arrival arrives and ends when the last departure departs (maybe a little longer). We'll be set up in Yogi's heated hangar, located closest to the runway in the southern hangar group. Early arrivals will find hot coffee, cocoa and donuts waiting. Lunch will follow our **10:00am** January MLF club meeting, with hamburgers, brats, hot dogs and fix'ns provided, along with liquid refreshments. As always, you're invited to bring a dish to pass.

The airport is located along the western banks of the Rock River, between Jefferson and Fort Atkinson, Wisconsin, south of I-94. Exit at Johnson Creek and follow Hwy 26 south to the Hwy 89 exit (off the Jefferson Bypass). Turn east off the exit, then south on Business 26 to Airport Rd. Only one way to go there. Take Cty K south to the 3rd driveway on your right. Follow the taxiway around to the middle group of hangars and park at the end of the middle taxiway. You can also take County K directly out of Jefferson or Fort for a scenic drive along the Rock River.

Fort Atkinson Municipal Airport (61C) is listed in the Wisconsin Airport Directory and Pilot's Guide. Runway 03/21 is 3800' long, hard surface and plowed in the winter. Hard surface parking is located mid-field. There are grassy areas north and east of the main runway suitable for ultralight and/or skiplane operations but please call ahead for a condition report (262-490-6561).



**Latitude: 42° 58' N Longitude: 88° 49' W Elevation: 800 ft. CTAF: 122.9
Contact: James Hoepfner at 262-490-6561 for further info.**